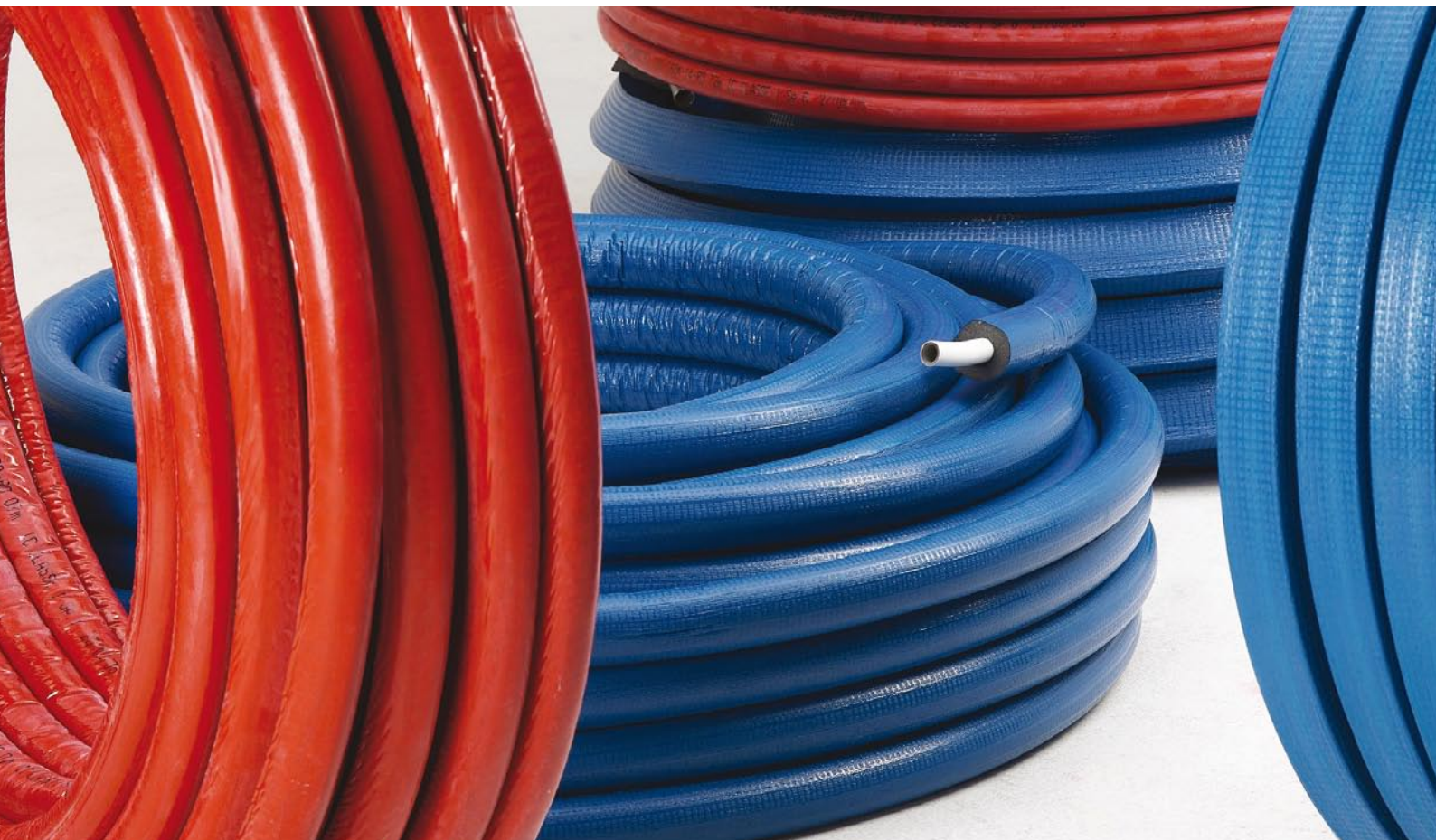


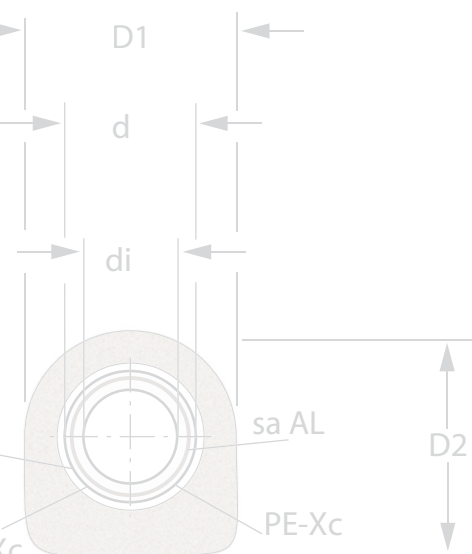
# HENCO PRE-INSULATED MULTILAYER PIPE



RADIATOR



SANITARY



MADE IN BELGIUM

Your Connection to Perfection



# Pre-insulated Henco multilayer pipe

The Henco PE-Xc/AL/PE-Xc multilayer pipe must be equipped with insulating material supplied by the manufacturer to protect the pipe against:

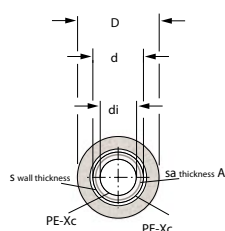
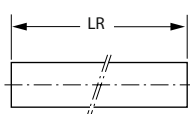
- ▶ condensation
- ▶ heat loss
- ▶ expansion
- ▶ flow noise

It is also advised to insulate the pipes where they are grouped at high temperatures (underfloor heating effect).

The PE-foam has an extruded PE-film coloured red or blue providing the necessary protection. The insulating material is CFC-free and has the following technical specifications:

Quality standard	UNI EN ISO 9002-94
Lambda value	0,040 W/mK bij + 40°C
Fire classification	1 - UNI 9177 en UNI 8457
Temperature stability	-35°C tot + 95°C
Thickness (round)	6,10 of 13 mm
Thickness (eccentric)	6 mm above and 13 or 26 mm beneath

## TYPE: ISO ISO Pre-insulated (coil)

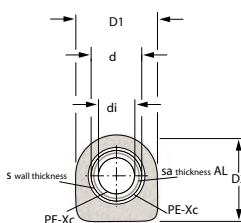
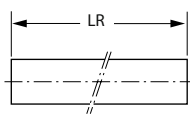
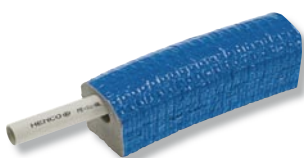


COILS: 6 MM INSULATION – BLUE OR RED							
d	di	D	s	sa	LR	Packing m/pallet	
mm	mm	mm	mm	mm			
14	10	26	2	0,4	100 M	100/1300 M	
16	12	28	2	0,4	100 M	100/1300 M	
18	14	30	2	0,4	50 M	50/650 M	
20	16	32	2	0,4	50 M	50/700 M	
26	20	38	3	0,5	25-50 M	50/500 M	
32	26	44	3	0,7	25 M	25/225 M	

COILS: 10 MM INSULATION – BLUE OR RED							
d	di	D	s	sa	LR	Packing m/pallet	
mm	mm	mm	mm	mm			
14	10	34	2	0,4	50 M	50/600 M	
16	12	36	2	0,4	50 M	50/650 M	
18	14	38	2	0,4	50 M	50/650 M	
20	16	40	2	0,4	50 M	50/500 M	
26	20	46	3	0,5	25 M	25/275 M	
32	26	52	3	0,7	25 M	25/250 M	

COILS: 13 MM INSULATION – BLUE OR RED							
d	di	D	s	sa	LR	Packing m/pallet	
mm	mm	mm	mm	mm			
16	12	42	2	0,4	50 M	50/400 M	
18	14	44	2	0,4	50 M	50/400 M	
20	16	46	2	0,4	50 M	50/400 M	
26	20	52	3	0,5	50 M	50/400 M	
32	26	58	3	0,7	25 M	25/250 M	

## TYPE: ISO-EXZ Pre-insulated eccentrically (coil)



COILS: 13 MM INSULATION BENEATH AND 6MM ABOVE – BLUE*							
d	di	D1	D2	s	sa	LR	Packing m/pallet
mm	mm	mm	mm	mm	mm		
16	12	40	40	2	0,4	50 M	50/500 M
18	14	40	40	2	0,4	50 M	50/400 M
20	16	40	40	2	0,4	25 M	25/250 M
26	20	50	52	3	0,5	25 M	25/200 M

\*50% EnEV 2002

COILS: 26 MM INSULATION BENEATH AND 6 MM ABOVE – BLUE*							
d	di	D1	D2	s	sa	LR	Packing m/pallet
mm	mm	mm	mm	mm	mm		
16	12	40	53	2	0,4	25 M	25/200 M
20	16	40	53	2	0,4	25 M	25/200 M
26	20	50	56,5	3	0,5	25 M	25/200 M

\*100% EnEV 2002



Your Connection to Perfection

