

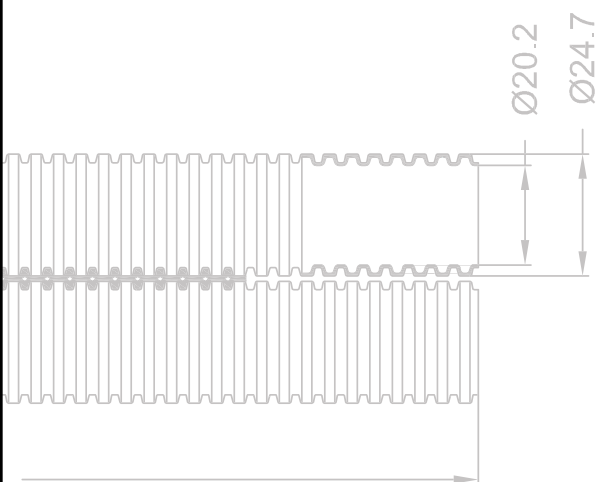
HENCO COMBI®



RADIATOR



SANITARY

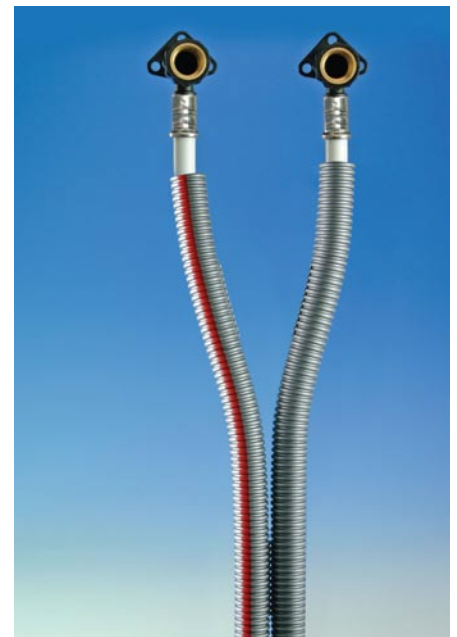


Your Connection to Perfection

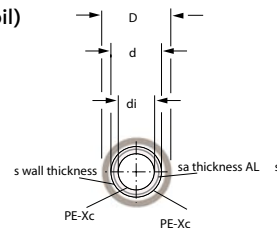
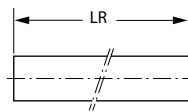


HENCO COMBI®

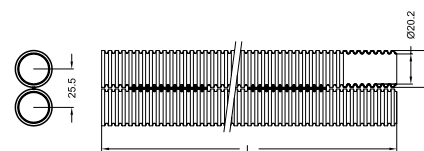
The HENCO COMBI® consists of two Henco PE-Xc/AL/PE-Xc pipes with two polyethylene conduit sleeves joined together by perforated strip. Henco Combi provides a neat solution for a tidy and professional installation. When the pipe needs to be separated the sleeves simply peel apart along the perforations. For simple identification one of the conduits is colour coded with a continuous red line.



TYPE: HENCO COMBI® Henco Multilayer pipe with dual protection hose (Coil)



COIL					
d	di	D	s	sa	LR
mm	mm	mm	mm	mm	
16	12	25	2	0,4	50 M



Your Connection to Perfection

