

# HENCO VISION MANIFOLDS

EN



RADIATOR



SANITARY



Your Connection to Perfection

## HENCO VISION MANIFOLDS ... for installers with vision

- ▶ fully modular
- ▶ for sanitary as well as heating installations
- ▶ highest quality and easy installation guaranteed

### PVDF, a high quality synthetic material with a unique range of properties

Like the Henco Vision push-fit fittings and press fittings, the Henco Vision manifolds are made with the highest precision and of the best materials. The manifolds are entirely made of PVDF, a high-quality synthetic material with a unique range of properties:

- ▶ Extremely resistant to high pressure and temperatures
- ▶ Excellent mechanical strength
- ▶ High flexibility: can bend up to 10°
- ▶ Perfectly suited for drinking water and foodstuffs

### Installation

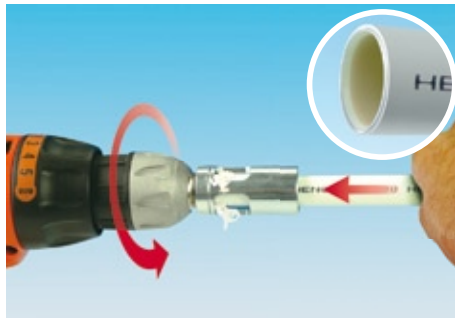
It takes only 3 steps to connect the water supply and different heating circuits.

- 1. CUT** - Ensure the pipe is cut at a 90° angle.
- 2. CALIBRATE** - Use the Henco Kalispeed to centre the pipe and cut a continuous bevel on both the inner and outer edges of the pipe.
- 3. PUSH** - Remove the black protection cap and slide the calibrated pipe all the way into the fitting until the pipe colours completely the vision windows.

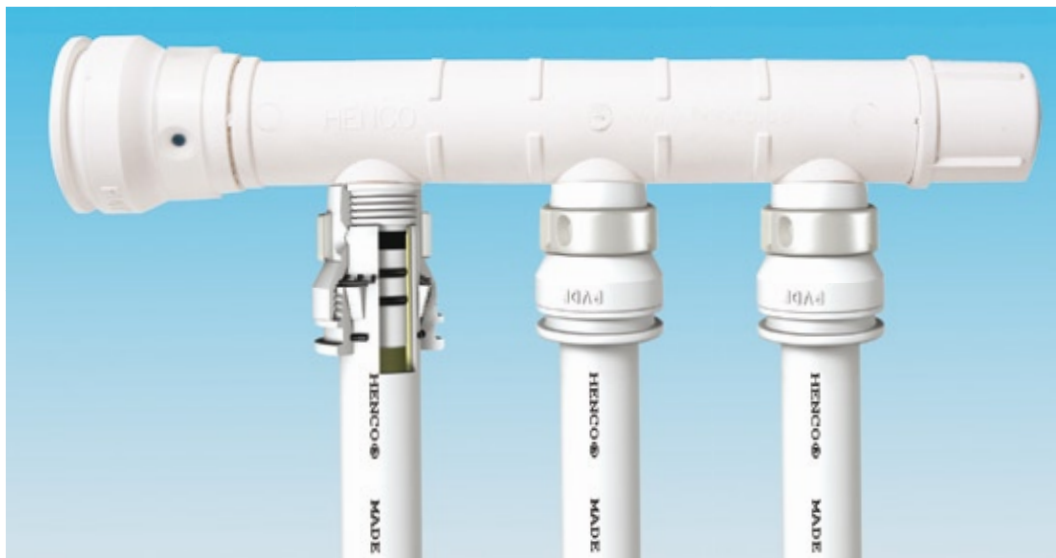
#### 1 CUT



#### 2 CALIBRATE



#### 3 PUSH



## Fully modular: anything is possible

The Vision product range offers endless possibilities. Manifolds can be composed by connecting the bodies/extensions with 2 or 3 connections to each other. The manifolds can be extended with supplies, stop ends and straight adapters. The bodies/extensions with EK-connections can be foreseen with EK-fittings of diameter 16 or 20.

Important! The thread the supply and return of the manifolds are fitted with is a special Henco thread. Therefore it is not allowed to screw metal threaded fittings into or onto the manifolds!



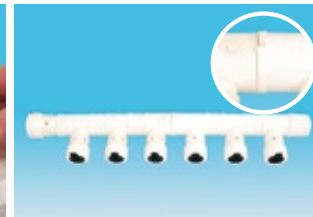
Extension or body with 2 EK-connections.



Extension or body with 3 EK-connections.



Screw the extension onto the manifold.



Finished manifold for 6 heating circuits.

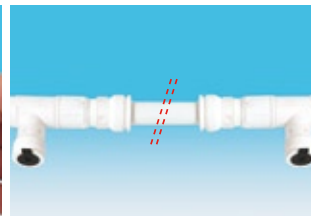
It is also possible to connect one manifold to another manifold at a different location. To do so, simply screw the end cap off the manifold and replace it with a straight female adapter. Or you can opt for a manifold with a pre-assembled straight female adapter.



Screw the end cap off the manifold.



Screw the straight female adapter onto the manifold.



Straight female adapter with a pipe to another manifold.

In addition, T and 90° elbow fittings are available which can be easily inserted into the supply pipe. Once inserted, the fittings can still be rotated in any direction. Useful!



Supply T for manifold.



Supply bent 90° for manifold.



90° supply elbow can be rotated.



Huge space savings when using the 90° supply elbow.

If a specific heating circuit of the manifold must not yet be used, it can be sealed with a stopper and a clip. Simply insert the stopper into the fitting and slide the clip into the stopper grooves. Done!

If the connection is effectively used afterwards, simply remove the clip from the stopper and then the stopper from the fitting. The calibrated pipe can then be inserted into the fitting, to connect the new circuit. The stopper and clip are reusable.



Replace the stopper and clip.



Insert the stopper into the connection.



Slide the clip into the grooves and press.



Reusing the connection: remove the clip from the stopper using pointed pliers.

Of course the stopper and clip can also be used in combination with the entire range of push-fit fittings. A starter pipe with a push-fit fitting and stopper, anything is possible. If the standby pipe is used, remove the clip and stopper and insert the pipe into the fitting.



Standby pipe with fitting and stopper.



Use pliers to remove the clip.

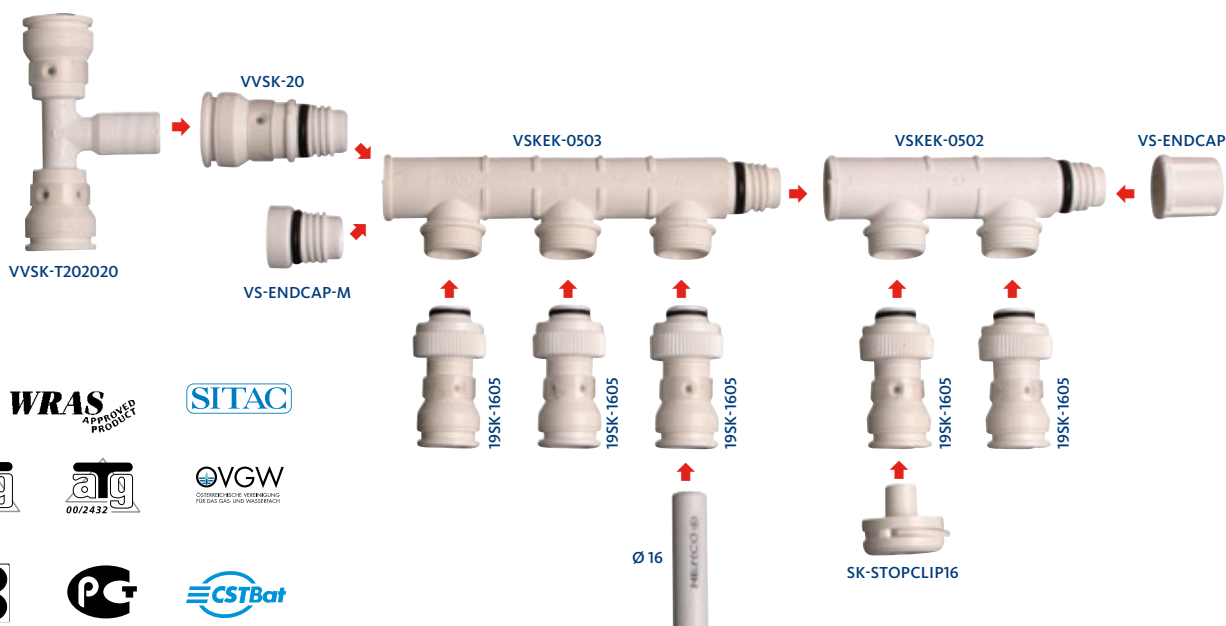


Remove the stopper.



Insert the calibrated pipe into the fitting.

# A fully modular system



TYPE: VSKEK-0502	ART. NR.	Type	TYPE: VSKEK-0503	ART. NR.	Type	TYPE: VSK-1616	ART. NR.	Type	TYPE: VSK-161616	ART. NR.	Type
Extension or body for manifold, two EK-connections	VSKEK-0502	2x3/4" EK	Extension or body for manifold, three EK-connections	VSKEK-0503	3x3/4" EK	Extension or body for manifold, two SK-connections Ø16	VSK-1616	1616	Extension or body for manifold, three SK-connections Ø16	VSK-161616	161616



TYPE: 19SK	ART. NR.	Type	TYPE: VVSK	ART. NR.	Type	TYPE: VVSK-90	ART. NR.	Type	TYPE: VVSK-T	ART. NR.	Type
Push fitting with EK-connection	19SK-1605 19SK-2005	16x3/4" 20x3/4"	Supply for manifold	VVSK-20 VVSK-26	20 26	Bent 90° for manifold	VVSK-26-90 VVSK-26-90	20-90 20-90	T for manifold	VVSK-T202020 VVSK-T262626	202020 262626



VS-ENDCAP	ART. NR.	Type	VS-ENDCAP-M	ART. NR.	Type	TYPE: VDSK	ART. NR.	Type	TYPE: SK-STOPCLIP	ART. NR.	Type
Stop end female for manifold	VS-ENDCAP	S	Stop end male for manifold	VS-ENDCAP-M	S	Straight female adapter for manifold	VDSK-20 VDSK-26	20 26	Reusable stop and clip for push fitting	SK-STOPCLIP-16 SK-STOPCLIP-20 SK-STOPCLIP-26	16 20 26



TYPE: SK-B05	ART. NR.	Type	TYPE: VISION KEY	ART. NR.	Type
Bracket for Vision manifolds	SK-B05	B05	Vision Key	Vision Key 16 Vision Key 20 Vision Key 26	16 20 26



10-year Henco system guarantee



Your Connection to Perfection

