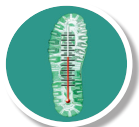


HENCO CONTROL UNITS

NL



UNDERFLOOR HEATING



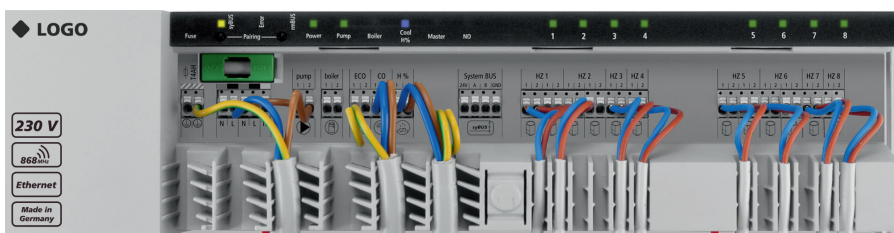
Underfloor heating control units: wireless

Product features

- ▶ Next generation room-by-room temperature control.
- ▶ The multi-purpose system excels in terms of energy efficiency and ease of use.
- ▶ It can even be controlled with smartphones and PCs.
- ▶ Pump, boiler control and change-over input heating and cooling.

Base Station 230V

- ▶ Easy clamp system for wire (DIN EN 60730-1).
- ▶ Heating and cooling as standard.
- ▶ Pump and boiler control, pump protection, antifreeze function and valve protection, NC/NO.
- ▶ Optimal control processes due to long-standing experience.
- ▶ Max. 18 actuators with free allocation to the rooms.
- ▶ Up to 7 bases can be cascaded in a system.



Room thermostats

Room sensor

- ▶ Wireless sensor for precise temperature measurement.
- ▶ Settings can be adjusted under cover or via the web.
- ▶ Adjustment 10-28 °C.

Analog

- ▶ Rotation button with soft adjustments each 1/4°C.
- ▶ Adjustment limit of the desired temperature.
- ▶ Patented calibration of the temperature possible.

LCD

- ▶ System and room specific programming and set-ups.
- ▶ Three levels of menus: one for the client, one for set-up, and one for secure access via a numerical code (increased security) for contractors.
- ▶ Variation with floor sensor (option)
- ▶ Scratch-resistant front (polycarbonate).



Web & app control

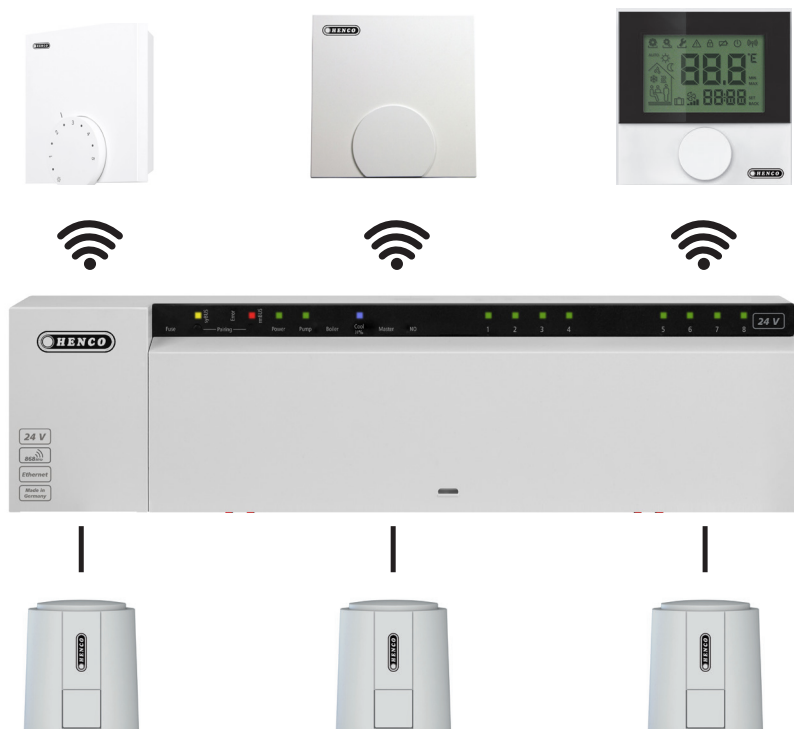
- ▶ Intuitive user interfaces for smart phones, tablets, and PCs.
- ▶ Quick and easy implementation into the home network.
- ▶ Complete control over all functions.
- ▶ Cloud service for the realisation of a direct connection over the Internet.



* LAN and SD-card are not included with article CU-8ZONEB-RF and CU-12ZONEB-RF (see page 6)

Smart home ready

- ▶ XML interface for integration into home automation systems.
- ▶ The existing home network (routers, WiFi, switches etc.) can be drawn on in the process.
- ▶ Integration into building control systems and EIB / KNX applications is also possible.



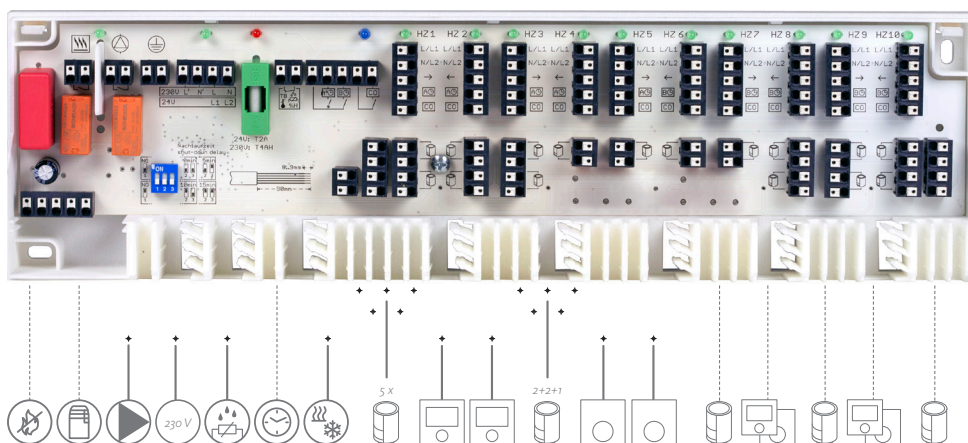
Underfloor heating control units: wired

Product features

- ▶ The new generation of an existing product.
- ▶ A perfect solution for all new builds and modernisation projects.
- ▶ Top quality features, installation and user-friendliness.
- ▶ Smart Start/Smart Stop technology for greater energy efficiency.
- ▶ Pump, boiler control and change-over input heating and cooling.

Base Station 230V - 24V

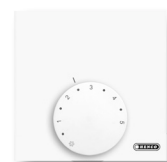
- ▶ Wall-mounted or on a DIN rail.
- ▶ Easy, intuitive installation with a screwless clamping method.
- ▶ Up to 5 actuator-connections per zones.
- ▶ 2 external inputs for activating temperature reduction.
- ▶ Easy clamp system (DIN EN 60730-1).
- ▶ Standard transformer (24V), standby < 0.3 watts.



Room thermostats

Analog

- ▶ Rotation button with soft adjustments each 1/4°C.
- ▶ Adjustment limit of the desired temperature.
- ▶ Patented 'desired temperature calibration'.



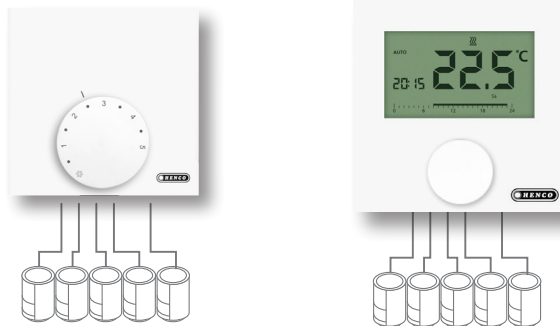
Display

- ▶ Version Komfort, without clock program.
- ▶ Version Control, with clock program.
- ▶ Adjustable room temperature reduction.
- ▶ Connection for an external sensor (version Control).
- ▶ High-quality scratch resistant display.

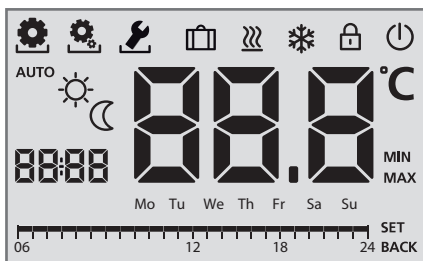


Stand alone

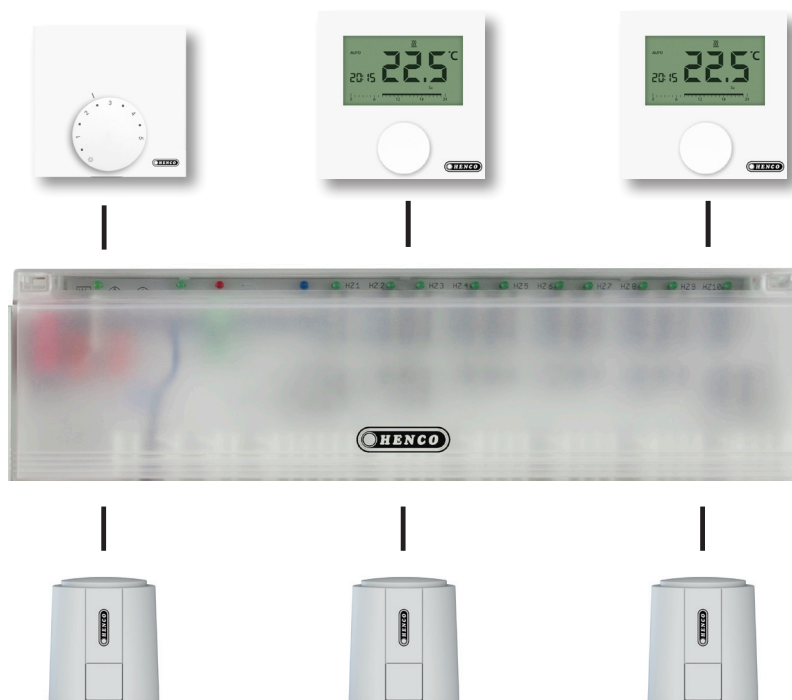
- ▶ All components can be used independently or as part of a system.
- ▶ Stand-alone control with up to 5 valve actuators connectable.



Functions



- | | | | |
|--|-------------------|-------------|--------------------|
| | Functions | | Night operation |
| | Settings | 8888 | Time |
| | Parameters | 888 | Temperature |
| | Holiday function | °C | Temperature unit |
| | Heating | MIN | Min. Cooling |
| | Cooling | MAX | Max.. Heating |
| | Child safety lock | Mo-Su | Weekdays |
| | Off-function | | Time scale |
| | Auto function | SET | Settings confirmed |
| | Day operation | BACK | Back |



Underfloor heating control units: overview wireless¹

Characteristics	Article Number	Characteristics	Article Number
• Wireless	CU-8ZONE-RF	• Wireless one zone	CU-MONO-RF
• System 230V	CU-8ZONEB-RF*	• System 230V	CU-REGB-RF
• CO-input	CU-12ZONE-RF	• CO-input	CU-REGC-RF
• Pump contact	CU-REGB-RF	• CO-input	CU-REGS-RF
• Boiler contact	CU-REGS-RF	• Pump contact	CU-REPEAT
• LAN	CU-REPEAT		CU-SENS
• 868 Mhz (bi-directional communication)	CU-ANT		
	CU-SENS		

* LAN and SD-card not included

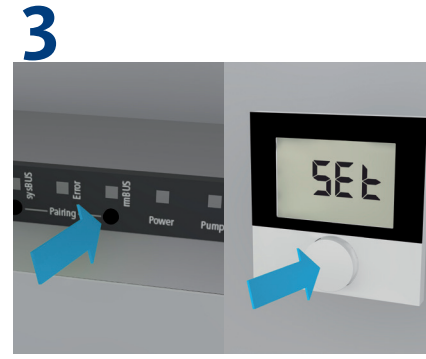
¹ Accessories: see page 8 Actuators



Screw off regulator-caps, screw on the valve adapter, snap on valve drive!



Connect, assign heating zones, start operation!



Now only activate the pairing mode!
Finished!

Underfloor heating control units: overview wired²

Characteristics	Article Number
<ul style="list-style-type: none"> Wired System 230 V 	CU-6ZONE-230V
	CU-DINRAIL
	CU-REGB-230V
	CU-REGB-HC230V
	CU-REGK-230V
	CU-REGC-230V

Characteristics	Article Number
<ul style="list-style-type: none"> Wired System 230 V CO-input Pump contact Boiler contact 	CU-6ZONEK-230V
	CU-10ZONEK-230V
	CU-DINRAIL
	CU-REGB-230V
	CU-REGB-HC230V
	CU-REGK-230V
CU-REGC-230V	

Characteristics	Article Number
<ul style="list-style-type: none"> Wired System 230 V Pump contact 	CU-6ZONEP-230V
	CU-DINRAIL
	CU-REGB-230V
	CU-REGB-HC230V
	CU-REGK-230V
	CU-REGC-230V

Characteristics	Article Number
<ul style="list-style-type: none"> Wired System 24 V 	CU-6ZONE-24V
	CU-DINRAIL
	CU-FCM-24V-01
	CU-REGB-24V
	CU-REGB-HC24V
	CU-REGK-24V
	CU-REGC-24V

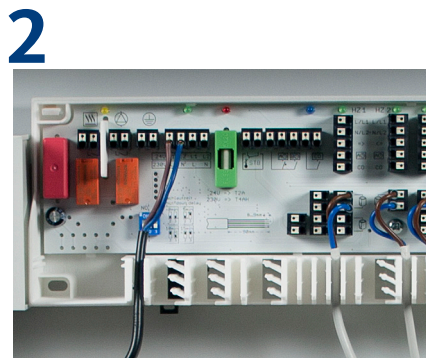
Characteristics	Article Number
<ul style="list-style-type: none"> Wired System 24 V CO-input Pump contact Boiler contact 	CU-6ZONEK-24V
	CU-10ZONEK-24V
	CU-DINRAIL
	CU-FCM-24V-01
	CU-REGB-24V
	CU-REGB-HC24V
	CU-REGK-24V
	CU-REGC-24V

Characteristics	Article Number
<ul style="list-style-type: none"> Wired System 24 V Pump contact 	CU-6ZONEP-24V
	CU-DINRAIL
	CU-FCM-24V-01
	CU-REGB-24V
	CU-REGB-HC24V
	CU-REGK-24V
	CU-REGC-24V

² Accessories: see page 8 Actuators



Reliable and child's play to operate!



Easy to install



Energy and cost savings

Underfloor heating control units: actuators

Product features

- ▶ Energy efficient operator: Only 1 Watt consumption.
- ▶ Adapter concept fits 99% of the existing valves and distributors.
- ▶ Patented protection in all mounting modes for leaking valves.
- ▶ Fully isolated contacts: no short-circuiting possible
- ▶ 100% waterproof.
- ▶ Also available with pluggable cable.
- ▶ 24V and 230V.



Simple 'click-on' installation without tools.



Mounting also upside down.



All electrical components are sealed from water (IP54).



Surge protection.



Actuators with fixed cable 1m



Actuators without fixed cable 1m



Valve adapter included for use with Henco manifolds

Actuator 230V

CU-ACT-230 V

CU-ACT-230V-PLUG

Actuator 24V

CU-ACT-24 V

CU-ACT-24V-PLUG

Cable

CU-PLUGCABLE-2M

CU-PLUGCABLE-5M

CU-PLUGCABLE-15M

