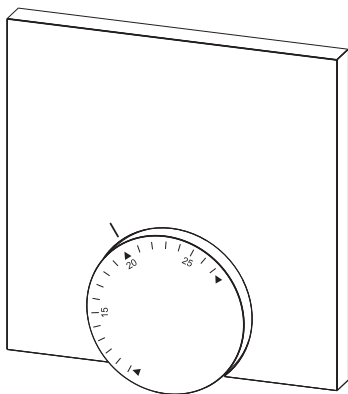


CU-REGB-RF





3

DEU



DEU

6

ENG

ENG

14

FRA

FRA

21

NDL

NDL

28

ITA

ITA

35

ESP

ESP

42



Warnung

Lebensgefahr durch Verschlucken

Kleinkinder können Batterien/Drehknopf verschlucken.

- RBG außerhalb der Reichweite von Kleinkindern montieren.



Warning

Danger to life in case of swallowing

Little children can swallow batteries/the rotary control.

- Install room control unit outside the reach of little children.



Avertissement

Danger de mort par suite d'ingestion

Les petits enfants peuvent avaler les piles/bouton.

- Placer RBG hors de portée des petits enfants



Waarschuwing

Levensgevaar door inslikken

Kleine kinderen kunnen accu's/draaiknop inslikken.

- RBG buiten het bereik van kleine kinderen monteren



Avvertenza

Pericolo di morte per ingestione

Le batterie e la manopola possono essere facilmente ingeriti da bambini piccoli.

- Installare l'unità di controllo fuori dalla portata dei bambini.



Advertencia

Peligro de muerte por atragantamiento

Niños pequeños podrían tragarse pilas/botones de giro.

- Montar el RBG fuera del alcance de niños pequeños.

DEU

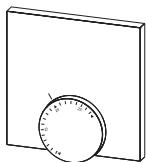
ENG

FRA

NDL

ITA

ESP



1 X



2 X

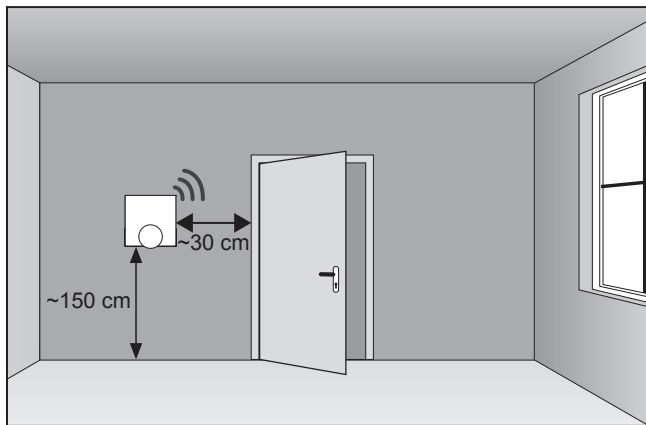


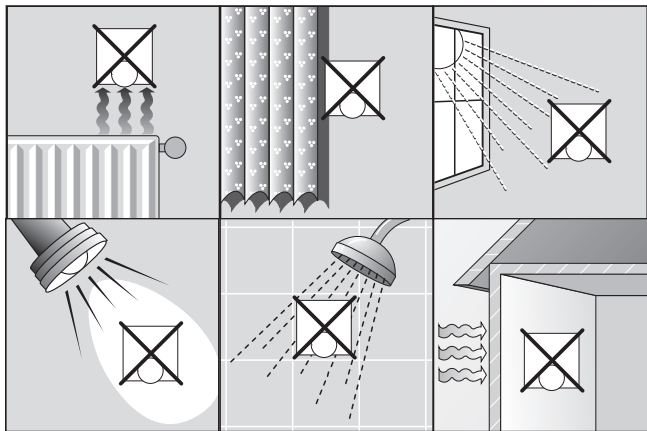
2 X*



1 X

* optional / en option / optioneel / opzionale / opcional





DEU

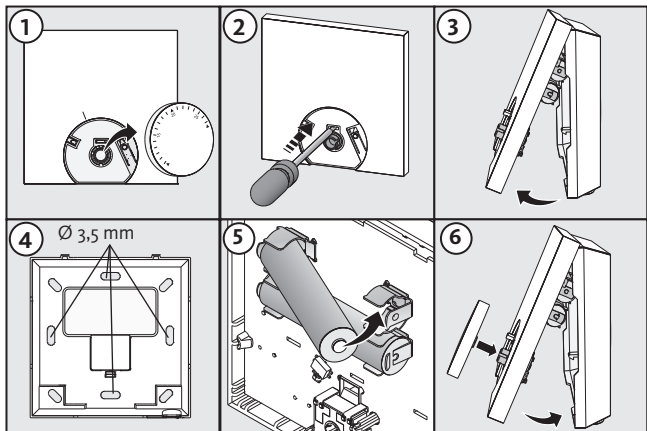
ENG

FRA

NDL

ITA

ESP



Content

1 Safety	15
Used signal words and notes	15
Intended use	15
General safety notes.....	15
2 Versions	16
Technical Data	16
Conformity.....	16
3 Operation	17
Overview	17
Commisioning (incl. pairing).....	17
Operation	17
Radio test.....	18
Limiting the adjustable temperature range (optional).....	18
Adjusting the target temperature	18
4 Cleaning and Troubleshooting	19
Troubleshooting.....	19
Changing the batteries.....	19
Cleaning.....	20
5 Decomissioning	20
Disposal.....	20

1 Safety

Used signal words and notes

The following symbols show you, that

- you must do something
- ✓ a precondition must be met



Warning

there is danger for life and limb.

Intended use

The wireless room control unit analog is the wireless operating unit for the Base Station Wireless CU-8ZONE-RF & CU-12ZONE-RF. The unit serves for

- ✓ the registration of the room temperature and the setting of the desired target temperature in the allocated heating zone.

Every other use is considered as not intended; the manufacturer cannot be held liable for this.

General safety notes



Warning

Danger to life in case of swallowing

Little children can swallow batteries/the rotary control.

- Install the room control unit outside the reach of little children.
 - Do not leave the room control unit unattended during a battery change.
-

- Retain this manual and provide it to future owners.

DEU

ENG

FRA

NDL

ITA

ESP

2 Versions

Technical Data

	CU-REGB-RF
Floor temperature monitoring	–
Voltage supply	2 x LR03/AAA (micro battery) alkaline
Radio technology	Radio, 868 MHz SRD Band
Radio range	25 m (in buildings)
Battery lifetime	>2 years
Protection type/protection class	IP20 / III
Ambient temperature	0 to 50°C
Ambient humidity	5 to 80 %, not condensing
Dimensions (WxHxD):	85 x 85 x 26 mm
Target temp. setting range	10 to 28°C
Target temperature resolution	0.25 K
Actual temp. measuring range	0 bis 40°C (int. sensor)
Measuring accuracy of int. NTC	±0,3 K

Conformity

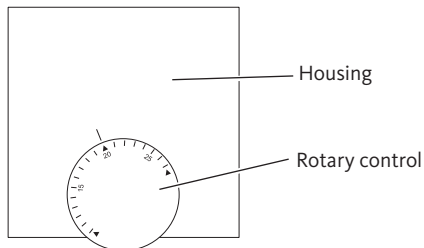
Dieses Produkt ist mit dem CE-Zeichen gekennzeichnet und entspricht damit den Anforderungen aus den Richtlinien:

- ✓ 2004/108/EG mit Änderungen „Richtlinie des Rates zur Angleichung der Rechtsvorschriften der Mitgliedsstaaten über die elektromagnetische Verträglichkeit“
- ✓ 2006/95/EG mit Änderungen „Richtlinie des Rates zur Angleichung der Rechtsvorschriften der Mitgliedsstaaten betreffend elektrischer Betriebsmittel innerhalb bestimmter Spannungsgrenzen“
- ✓ „Gesetz über Funkanlagen und Telekommunikationsendeinrichtungen (FTEG) und Richtlinie 1999/5/EG (R&TTE)“

Für die Gesamtinstallation können weitergehende Schutzanforderungen bestehen, für deren Einhaltung der Installateur verantwortlich ist.

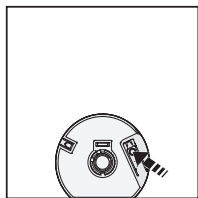
3 Operation

Overview



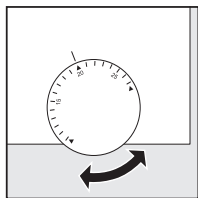
Commissioning (incl. pairing)

- Take off the rotary control.
- Activate the pairing function at the base station for the desired heating zone (see base station manual BSF XoXX2-XX).
- Press the pairing button (see picture to the right) shortly to activate pairing function of the room control unit.
- ✓ The base station and the room control unit are connected to each other.



Operation

- Set the target temperature by rotating the rotary control.



DEU

ENG

FRA

NDL

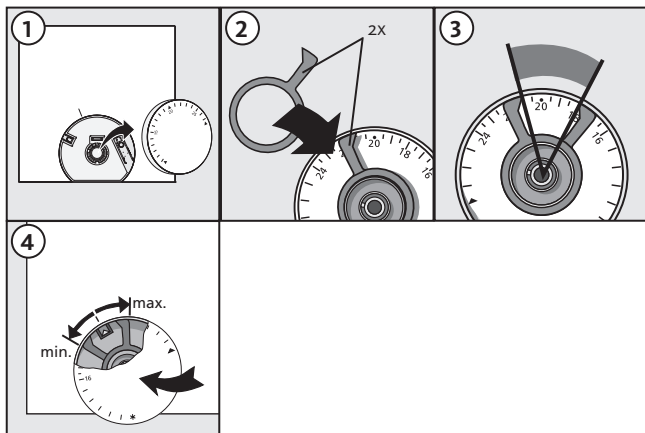
ITA

ESP

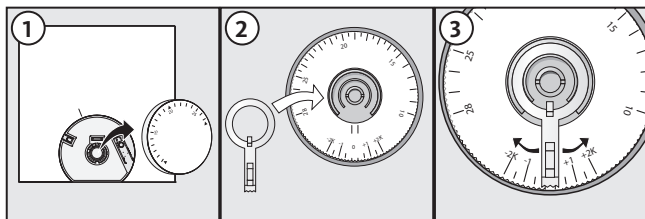
Radio test

- Pressing the rotary knob activates the radio test.
- ✓ The LED of the connected heating zone is toggled for 1 minutes, thus switched on or off depending on it's current operating state.

Limiting the adjustable temperature range (optional)



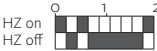
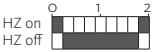

Adjusting the target temperature



4 Cleaning and Troubleshooting

Troubleshooting

Error signalling is performed via the heating zone LED of the base station the room control unit is assigned to.

LED base station	Meaning	Solution
<p>Heating zone Duration in seconds</p>  <p>HZ on HZ off</p>	Radio connection to the room control unit faulty	<ul style="list-style-type: none">➤ Move position of the room control unit➤ Install active antenna or repeater
<p>Heating zone Duration in seconds</p>  <p>HZ on HZ off</p>	Low battery	<ul style="list-style-type: none">➤ Change batteries of room control unit
<p>Heating zone Duration in seconds</p>  <p>HZ</p>	Emergency operation active	<ul style="list-style-type: none">➤ Change the batteries.➤ Perform a radio test.➤ Reposition the room control unit.➤ Replace a defective room control unit.

DEU

ENG

FRA

NDL

ITA

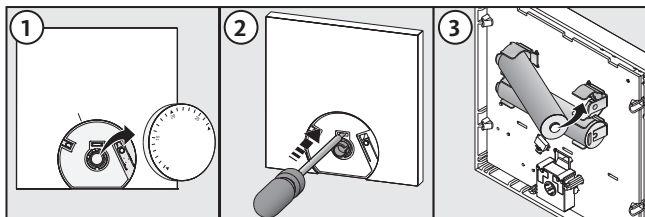
ESP

Changing the batteries

Warning **Danger to life in case of swallowing**

Little children can swallow batteries/rotating knobs.

- Do not leave the room control unit unattended during a battery change.



- Activate the room control unit after changing the batteries by pressing the pairing knob shortly.

Cleaning

Only use a dry and solvent-free, soft cloth for cleaning.

5 Decommissioning

Disposal



The batteries and the room control unit must not be disposed with domestic waste. The operator has the duty to hand the devices to appropriate collection points. The separate collection and orderly disposal of all materials will help to conserve natural resources and ensure a recycling in a manner that protects human health and the environment. If you need information about collection points for your devices, please contact your local municipality or your local waste disposal services.

DEU

ENG

FRA

NDL

ITA

ESP