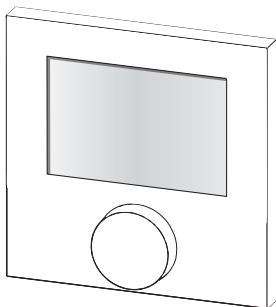
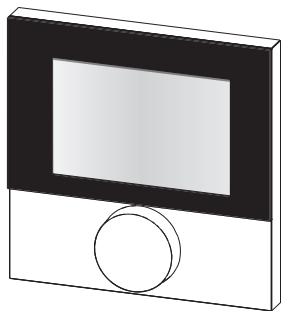


# CU-REGC-RF





### **Warnung**

#### **Lebensgefahr durch Verschlucken**

Kleinkinder können Batterien/Drehknopf verschlucken.

- RBG außerhalb der Reichweite von Kleinkindern montieren.



### **Warning**

#### **Danger to life in case of swallowing**

Little children can swallow batteries/the rotary control.

- Install room control unit outside the reach of little children.



### **Avertissement**

#### **Danger de mort par suite d'ingestion**

Les petits enfants peuvent avaler les piles/bouton.

- Placer RBG hors de portée des petits enfants



### **Waarschuwing**

#### **Levensgevaar door inslikken**

Kleine kinderen kunnen accu's/draaiknop inslikken.

- RBG buiten het bereik van kleine kinderen monteren



### **Avvertenza**

#### **Pericolo di morte per ingestione**

Le batterie e la manopola possono essere facilmente ingeriti da bambini piccoli.

- Installare l'unità di controllo fuori dalla portata dei bambini.



### **Advertencia**

#### **Peligro de muerte por atragantamiento**

Niños pequeños podrían tragarse pilas/botones de giro.

- Montar el RBG fuera del alcance de niños pequeños.



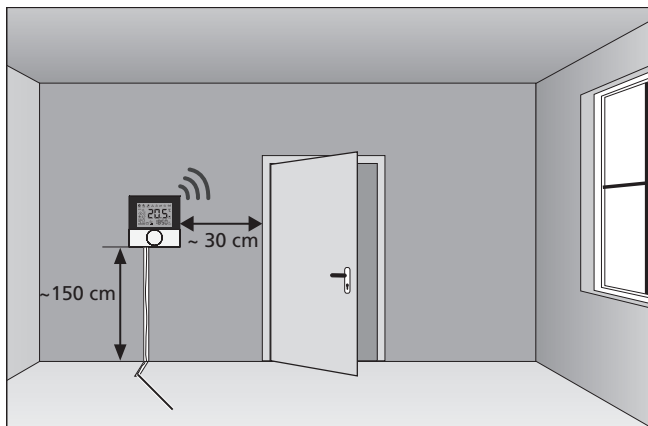
1 X

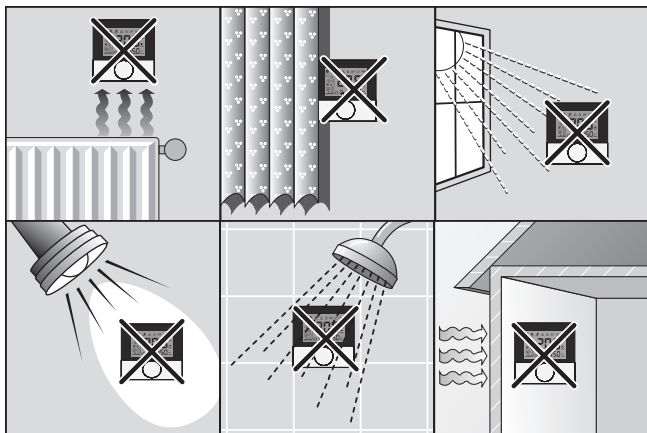


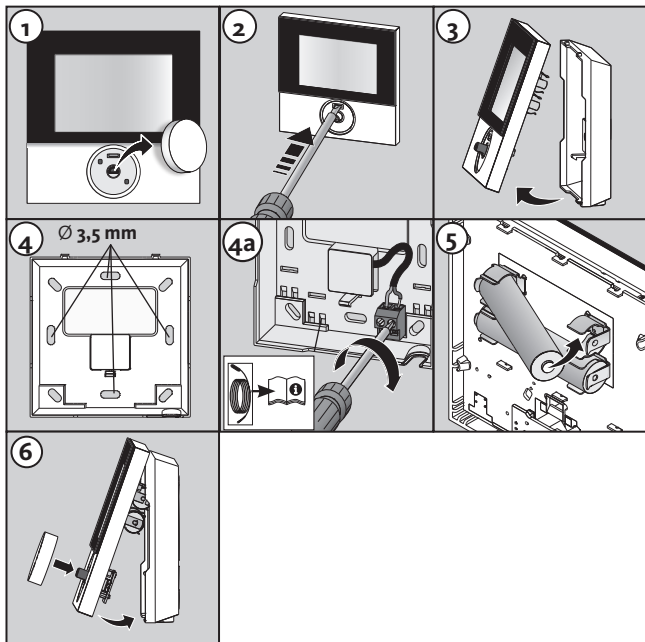
2 X



1 X







## Content

<b>1 Safety</b> .....	<b>23</b>
Used signal words and notes .....	23
Intended use .....	23
General safety notes.....	23
<b>2 Versions</b> .....	<b>24</b>
Technical data.....	24
Conformity.....	24
<b>3 Operation</b> .....	<b>25</b>
Overview and display .....	25
Operation .....	26
Radio test.....	26
Commissioning (incl. pairing).....	27
Comfort programs - Smart Start/Stop mode.....	27
Lifestyle functions overview .....	28
Lifestyle functions .....	29
Overview parameters .....	31
Parameters .....	32
Changing the batteries.....	34
<b>4 Cleaning and Troubleshooting</b> .....	<b>35</b>
Troubleshooting.....	35
Cleaning.....	36
<b>5 Decommissioning</b> .....	<b>36</b>
Disposal.....	36

DEU

ENG

FRA

NDL

ITA

ESP

# 1 Safety

## Used signal words and notes

The following symbols show you, that

- you must do something
- ✓ a precondition must be met



### **Warning**

---

there is danger for life and limb.

## Intended use

The radio-controlled room unit with display (in the following abbreviated as RBG) is the wireless operating unit for the Base Station Wireless CU-8ZONE-RF and CU-10ZONE-RF. The unit serves for

- ✓ the control of base stations wireless.
- ✓ the registration of the room temperature and the setting of the desired target temperature in the allocated heating zone.

Every other use is considered as not intended; the manufacturer cannot be held liable for this.

## General safety notes



### **Warning**

---

#### **Danger to life in case of swallowing**

Little children can swallow batteries/the rotary control.

- Install the room control unit outside the reach of little children.
  - Do not leave the room control unit unattended during a battery change.
- 

- Retain this manual and provide it to future owners.

DEU

ENG

FRA

NLD

ITA

ESP

## 2 Versions

### Technical data

	CU-REGG-RF
Floor temperature monitoring	Remote sensor
Voltage supply	2 x LRO3/AAA (micro battery) alkaline
Radio technology	Radio, 868 MHz SRD band
Battery lifetime	>2 years
Radio range	25 m (in buildings)
Protection type/protection class	IP20 / III
Ambient temperature	0 to 50°C
Ambient humidity	5 to 80 %, not condensing
Dimensions (WxHxD):	86 x 86 x 26,5 mm
Target temp. setting range	5 to 30°C
Target temp. resolution	0.2 K
Actual temp. measuring range	0 to 40°C (int. sensor)
Measuring accuracy of internal NTC	±0.3 K

### Conformity

This product is labelled with the CE Marking and thus is in compliance with the requirements from the guidelines:

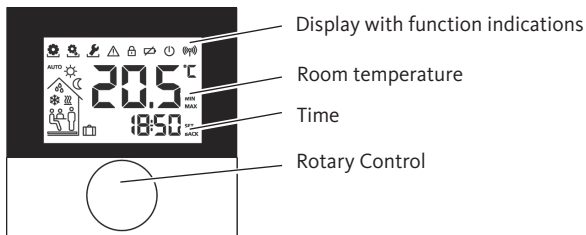
- ✓ 2004/108/EG with amendments “Council for Coordination of the Regulations of EU Member Countries regarding Electromagnetic Compatibility”
- ✓ 2006/95/EG with amendments “Council for Coordination of the Regulations of EU Member Countries regarding the electrical equipment for use within certain voltage limits”
- ✓ “Radio and Telecommunications Terminal Equipment Act (FTEG) and Guideline 1999/5/EG (R&TTE)”

Increased protection requirements may exist for the overall installation, the compliance of which is the responsibility of the installer.



# 3 Operation

## Overview and display



Symbol	Meaning
	Menu "Functions" active
	Menu "Parameters" active
	Menü „Service“ aktiv
	Important note/malfunction
	Child safety lock active
	Low battery
	Stand-by mode active
	Radiated power
<b>AUTO</b>	Automatic mode active

Symbol	Meaning
	Day mode active
	Night mode active
	Bedewing detected, cooling mode deactivated
	Cooling mode active
	Flashing: Smart Start/Stop mode active Lighting up: Heating mode active
	Presence active (only in Automatic mode)
	Party function active
	Holiday function Flashing: planned Lighting up: active
	Minimum floor temperature fallen short of

DEU

ENG

FRA

NDL

ITA

ESP

## Operation

The room control unit can be operated via the rotary control:



Pressing the rotary control activates menus and functions.

Rotating allows setting the target temperature as well as navigating between menus and functions.

A **basic level** and **three menus** are available.

### Basic level:



Rotating sets the desired target temperature.

### Menu selection with:



**Functions:** includes all important lifestyle functions.



**Parameters:** includes several parameters as e. g. heating and setback temperatures, date and many more.



**Service:** includes settings for the specialist (secured by PIN, see manual of the base station)

### Radio test

- A long press of the rotary knob activates the radio test.
- ✓ The LED of the connected heating zone is toggled for 1 minutes, thus switched on or off depending on it's current operating state.

DEU

ENG

FRA

NDL

ITA

ESP

## Commissioning (incl. pairing)

- ✓ Ensure that no other base stations are in pairing mode.
- Activate the pairing function at the base station for the desired heating zone (see base station manual CU-8ZONE-RF and CU-10ZONE-RF).
- Press the rotary control >1 s. in order to activate pairing function.
- ✓ The base station and the room control unit are connected to each other.

Note: If the base station has been programmed before, the date and time of the room control unit are set automatically.

For first commissioning of the base station:

- Set year, date and time by rotating, confirm entries by pressing.

## Comfort programs - Smart Start/Stop mode

Comfort programs include pre-defined heating times to be used for working days (1-5) or for the weekend (6-7). Outside the heating times the installation switches to night mode. You can select the comfort programs in the Parameter menu. The Smart Start/Stop Mode of the system calculates the required line-up times in order to provide the desired temperature at the starting and finishing time of the heating program.

Programm	Comfort time 1	Comfort time 2
P0	05:30 – 21:00	–
P1	04:30 – 08:30	17:30 – 21:30
P2	06:30 – 10:00	18:00 – 22:00
P3	07:30 – 17:30	–

You can create individual comfort programs with the on-line software available under [www.ezr-home.de](http://www.ezr-home.de) and transfer these to the basis station with a MicroSD card.



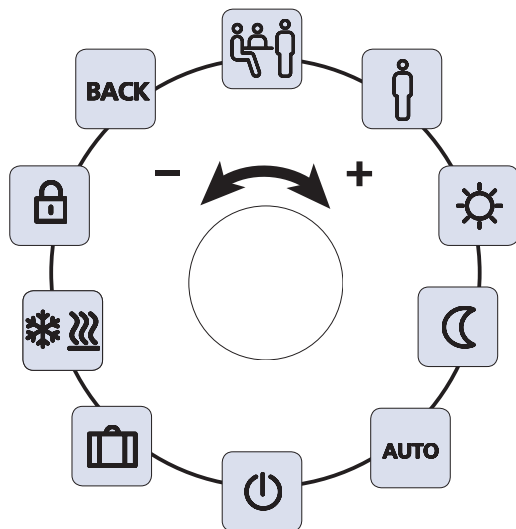
## Lifestyle functions overview

In this menu you can activate or deactivate the lifestyle functions.

- Press the rotary control.
- Activate the menu “Lifestyle functions” by pressing the rotary control again.
- Select the desired lifestyle function.

The following lifestyle functions are available to you; you can find further information in the table “Functions” on the next pages.

**Note:** It may take up to 10 minutes before changes of global lifestyle functions are displayed on all room control units.



DEU

ENG

FRA

NDL

ITA

ESP



## Lifestyle functions

Lifestyle functions	Symbol	Steps
<b>Party</b> Deactivates the temperature setback for XX hours		<ul style="list-style-type: none"><li>➤ Activate by pressing.</li><li>➤ Set the duration in hours (hh)</li><li>➤ Confirm your entry by pressing.</li></ul>
<b>Presence</b> Weekend heating times are also used for working day	<b>AUTO</b> 	<ul style="list-style-type: none"><li>➤ The automatic mode is only available on workdays.</li><li>➤ Activate by pressing.</li><li>➤ Finish by selecting another Lifestyle function.</li></ul>
<b>Day</b> ( <i>default settings</i> ) Permanent regulation after setting the target temperature		<ul style="list-style-type: none"><li>➤ Activate by pressing.</li></ul>
<b>Night</b> Permanent setback to a programmed night temperature.		<ul style="list-style-type: none"><li>➤ Activate by pressing.</li></ul>
<b>Automatic</b> Automatic temperature regulation according to the correspondingly activated comfort programs	<b>AUTO</b>	<ul style="list-style-type: none"><li>➤ Activate by pressing.</li></ul>

DEU

ENG

FRA





NDL

ITA

ESP



## Lifestyle functions

Lifestyle functions	Symbol	Steps
<b>Switching off</b> Deactivates the room control unit, the temperature is still displayed, antifreeze operation is activated		<ul style="list-style-type: none"><li>➤ Press in order to switch off the room control unit</li><li>➤ A short press switches the room control unit on again</li></ul>
The <b>Heating/Cooling mode</b> toggles between heating and cooling mode when the CO pilot is active.		<ul style="list-style-type: none"><li>✓ The CO pilot of the base is activated.</li><li>➤ Activate by pressing.</li><li>➤ Select the mode.</li><li>➤ Confirm your entry by pressing.</li></ul>
<b>Holiday mode</b> The temperature is set back automatically to the set holiday temperature		<ul style="list-style-type: none"><li>➤ Activate by pressing.</li><li>➤ Select 1. the start date and 2. the end date (dd:mm) confirm by pressing.</li><li>➤ Deactivate the holiday mode by calling the function again.</li></ul>
<b>Child safety lock</b> Locks the room operating unit		<ul style="list-style-type: none"><li>➤ Activate by pressing.</li><li>➤ Deactivate by prolonged pressing (&gt;3 s).</li></ul>
<b>BACK</b> The room control unit returns to the basic level.	<b>BACK</b>	<ul style="list-style-type: none"><li>➤ Exit the menu by pressing</li></ul>

DEU

ENG

FRA

NDL

ITA

ESP



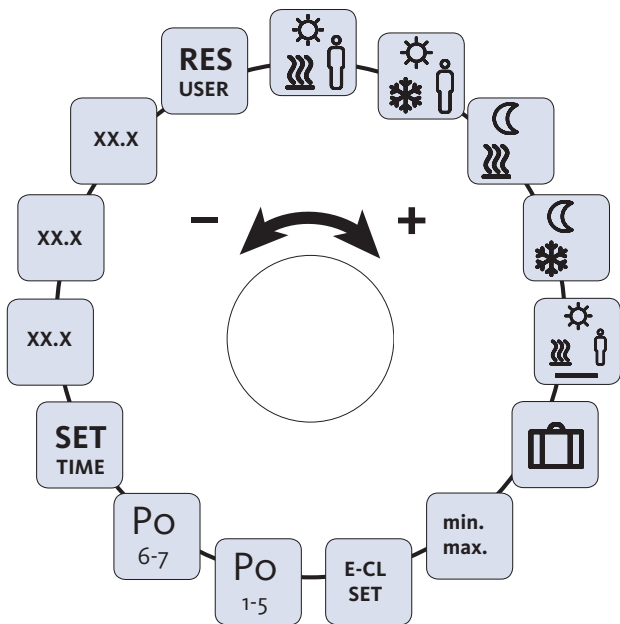
## Overview parameters

This menu is needed only for basic setup.

- Press the rotary control.
- Select the menu “Parameters” and activate it by pressing again.

The following parameters are available to you; you can find further information in the table “Parameters” on the next page.

**Note:** It may take up to 10 minutes before changes of global lifestyle functions are displayed on all room control units.



DEU

ENG

FRA

NDL

ITA

ESP



## Parameters

Parameters	Symbol	Steps
Temperature for presence in heating mode		<ul style="list-style-type: none"><li>➤ Activate and set the desired temperature.</li><li>➤ Confirm by pressing.</li></ul>
Temperature for presence in cooling mode		<ul style="list-style-type: none"><li>➤ Activate and set the desired temperature.</li><li>➤ Confirm by pressing.</li></ul>
Setback temperature for heating mode		<ul style="list-style-type: none"><li>➤ Activate and set the desired temperature.</li><li>➤ Confirm by pressing.</li></ul>
Setback temperature for cooling mode		<ul style="list-style-type: none"><li>➤ Activate and set the desired temperature.</li><li>➤ Confirm by pressing.</li></ul>
Floor heating minimum temperature		<ul style="list-style-type: none"><li>➤ Activate and select the desired comfort temperature (1.0...6.0 ≈ 18 °C...28 °C)</li><li>➤ Confirm by pressing.</li></ul>
Setback temperature for holidays		<ul style="list-style-type: none"><li>➤ Activate and set the desired temperature.</li><li>➤ Confirm by pressing.</li></ul>

DEU

ENG

FRA

NDL

ITA

ESP





## Parameters

Parameters	Symbol	Steps
<b>Setting the temperature limit</b>	min max	<ul style="list-style-type: none"><li>➤ Activate</li><li>➤ Select the min./max. settable temperature, confirm each by pressing</li></ul>
<b>Switching the external timer on and off</b>	E-CL SET	<ul style="list-style-type: none"><li>➤ Activate and select the status On or Off.</li><li>➤ Confirm by pressing.</li></ul>
<b>Select Comfort program for working days</b>	Po 1-5	<ul style="list-style-type: none"><li>➤ Activate and confirm entry.</li><li>➤ Select and activate lifestyle program (Po-P3).</li></ul>
<b>Select Comfort program for the weekend</b>	Po 6-7	<ul style="list-style-type: none"><li>➤ Activate and confirm entry.</li><li>➤ Select and activate lifestyle program (Po-P3).</li></ul>
<b>Set time/date</b>	SET TIME	<ul style="list-style-type: none"><li>➤ Activate, set year (yyyy), month (mm) and day (dd) as well as time (hh:mm), confirm each by pressing.</li></ul>
<b>Info software version of room control unit</b>	So1 XX-XX	<ul style="list-style-type: none"><li>➤ Display of the room control unit software version</li></ul>
<b>Info base station software version</b>	So2 XX-XX	<ul style="list-style-type: none"><li>➤ Display of the base station software version</li></ul>
<b>Info software version Ethernet Controller</b>	So3 XX-XX	<ul style="list-style-type: none"><li>➤ Display of the software version of the Ethernet Controller</li></ul>

DEU

ENG

FRA

NDL

ITA

ESP



## Parameters

Parameters	Symbol	Steps
<b>User level reset</b> !Reset of all user settings to factory settings!	RES USER	<ul style="list-style-type: none"><li>➤ Activate and select Yes</li><li>➤ Press in order to reset all functions.</li></ul>

DEU

ENG

FRA

NDL

ITA

ESP

## Changing the batteries

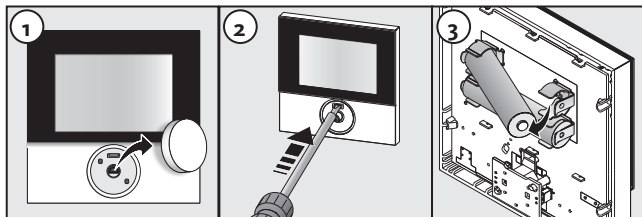


### Warning

#### Danger to life in case of swallowing

Little children can swallow batteries/rotating knobs.

- Do not leave the room control unit unattended during a battery change.









- Activate the room control unit by pressing.
- ✓ All previously made settings will be recovered.

## 4 Cleaning and Troubleshooting

### Troubleshooting

For error signalling purposes, the corresponding symbols in the display flash.

Display	Meaning	Elimination
	Low battery	➤ Battery change soon necessary.
	Connection to base station faulty	➤ Check the voltage supply of the base station. ➤ Use a repeater or an active antenna (accessories) for a higher radio range. ➤ Contact your electric installer in case of a defect.
 Err 0001	Internal temperature sensor defective.	➤ The room control unit must be changed.
 Err 0002	External temperature sensor defective.	➤ Replacement necessary, contact your electric installer.
 Err 0004	Very low battery	➤ Change the batteries immediately.
 Err 0005	Base station not found in spite of successful pairing	➤ Check the voltage supply of the base station. ➤ Perform another pairing of the room control unit. ➤ Contact your electric installer.

DEU


ENG

FRA

NDL

ITA

ESP

Display	Meaning	Elimination
 Err 0006	Communication between base stations faulty	<ul style="list-style-type: none"> <li>➤ Check the voltage supply of the base station.</li> <li>➤ Contact your electric installer.</li> </ul>

## Cleaning

Only use a dry and solvent-free, soft cloth for cleaning.

## 5 Decommissioning

### Disposal



The batteries and the room control unit must not be disposed with domestic waste. The operator has the duty to hand the devices to appropriate collection points. The separate collection and orderly disposal of all materials will help to conserve natural resources and ensure a recycling in a manner that protects human health and the environment. If you need information about collection points for your devices, please contact your local municipality or your local waste disposal services.

